



45 Pillow

Intarsia crochet pattern

Thank you for choosing my pattern...Let's celebrate an awesome President!

There are 3 important parts to this pattern:

- 1) **Intarsia Crochet**
Pages 2 – 4 Definition, instruction and tips. You may skip this part if you are familiar with intarsia patterns. Helpful tips are included here as well.
- 2) **Pillow Instructions** Specific instructions for THIS pattern.
Page 5 – 9
- 3) **Graph**
Separate PDF file Colored graph with color chart and stitch direction details.

Intarsia Crochet

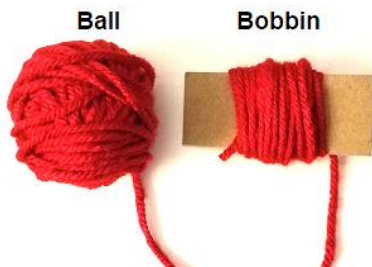
(Skip to pg. 5 if you already know how to do Intarsia crochet)

Definition: Intarsia crochet is a crochet method that creates a multi-colored project, and is often done neatly on both the right and wrong sides. One sided intarsia projects are neat on the right side only with strands known as “floats” on the wrong side. This method uses several colors and resembles tapestry crochet, except you don’t “carry along” your yarn after a color change more than 2 stitches.

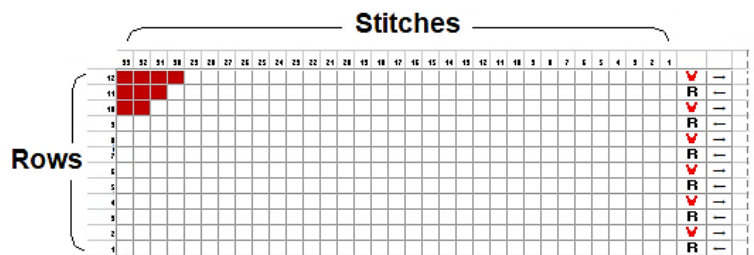
Instructions: In simple terms, you begin intarsia crochet with making a foundation chain, then using a graph, work single crochet (sc) in each stitch, making color changes along the way as shown on the graph. While there are many intarsia crochet tutorials available on youtube.com, below are tips to make your project go smoother:

Tips

- Make/use small balls (or bobbins) of yarn for color changes that result in small patches of colored areas in the pattern. Use large balls for large portions.

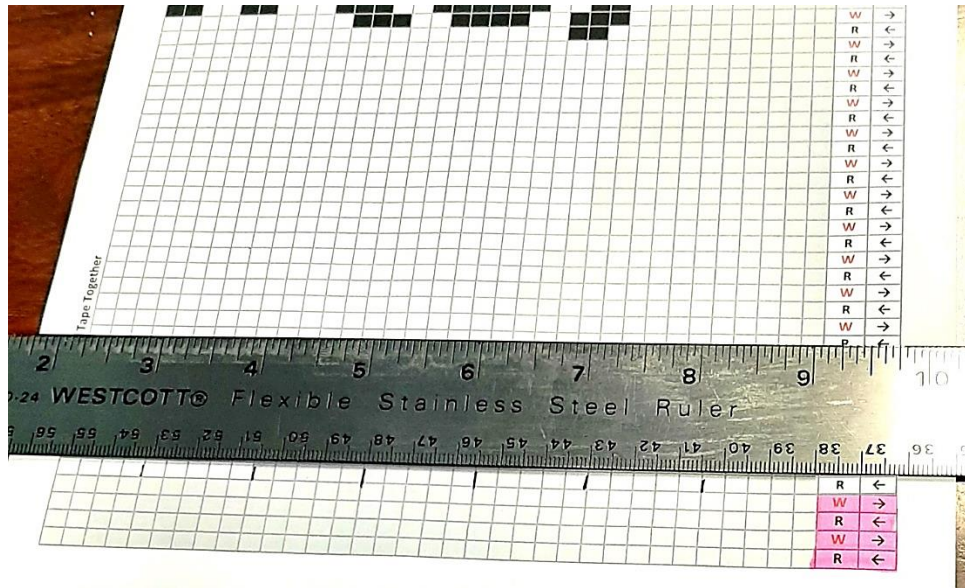


- It is very helpful to corral your small and large balls of yarn in a large bowl, pot or basket to keep them from rolling around on the floor or getting away from you.
- Each square on the graph is one SINGLE CROCHET.
- Pattern starts at the BOTTOM RIGHT of your graph. Arrows are provided on the pattern to show which direction to read the pattern while you crochet.



Start here after crocheting foundation chain.

- VERY HELPFUL – Use a highlighter to mark off rows completed on the graph. Use a ruler to keep your place on the graph (see below). This helps with focusing on the row you are currently working on. It is also helps to mark the graph in 5-stitch increments when working a long stretch of color to make sure your stitch count is accurate.



- Color changes - you will be dropping and picking up different colors when you change colors most of the time. Simple instructions are: When working the last step of the last sc before the color change, use the next color as your last “yarn over” and pull through. Tug on your dropped and/or joined strands if needed so they are not loose and to keep the tension consistent, then continue crocheting.



If your color change stretches just one or two stitches, work over the stretched strand to cover it.



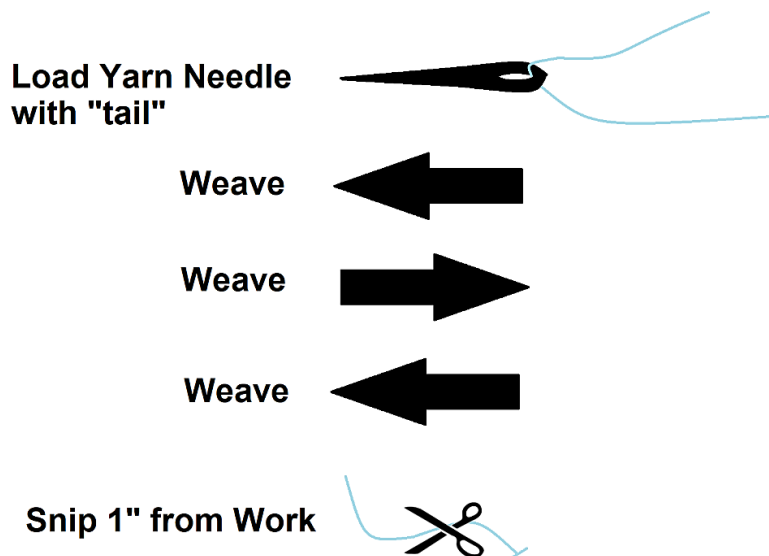


If your color change stretches beyond 2 stitches, it is best to cut and rejoin your yarn ball (or bobbin).

- Keep “tails” (ends to be woven in) on **WRONG** side of panel you are crocheting. It is suggested that you weave in ends every 20 rows if you don’t want to save doing them all until the end of the project. A lot of tails may seem overwhelming at the end.



- When weaving in tails, it is not necessary to cut your yarn close to your work after weaving. All of these ends are on the **WRONG** side of the pillow and will not be seen. It is recommended that using your yarn needle, you weave in 3 times in opposing directions, then snip tail about 1” from your work.



- Periodically, you may need to untangle your yarn balls (or bobbins) to keep them from getting too messy as you crochet along.

Pillow Instructions

Finished Size: Approximately 12” H x 18” W

Materials:

Main Color – I Love This Yarn – White (370 yds)

Other Colors – I Love This Yarn – Red (25 yds)

I Love This Yarn –Navy (20 yds)

I Love This Yarn –Lt. Gray (35 yds)

(Special Note -I used “I Love This Yarn” by Hobby Lobby for softness. You may prefer to use Red Heart or any other Worsted Weight Medium #4 yarn. It is recommended to check your gauge when you begin to crochet and adjust your hook size if necessary to achieve proper gauge.)

12” x 18” Square Pillow Insert **OR** Polyfil Stuffing

Yarn Needle

Crochet Hook size H (5.0 mm)

Gauge: 4” x 4” square is 16 sc x 18 rows (17 rows for Red Heart yarn)

Abbreviations:

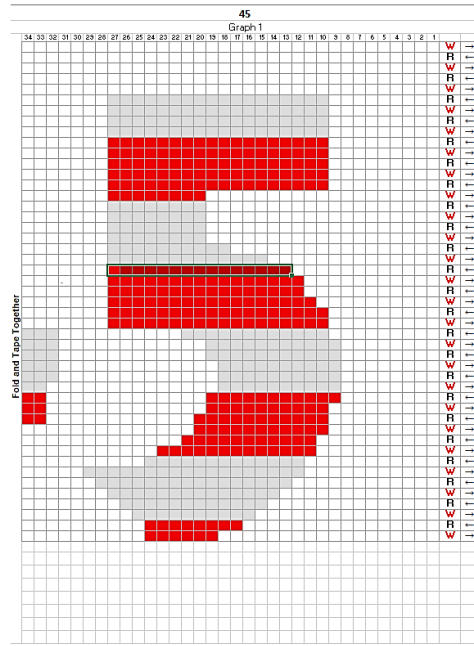
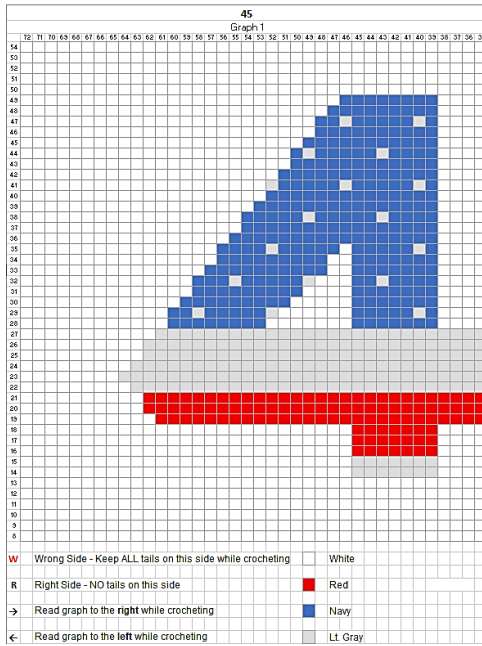
ch – chain

sc – single crochet

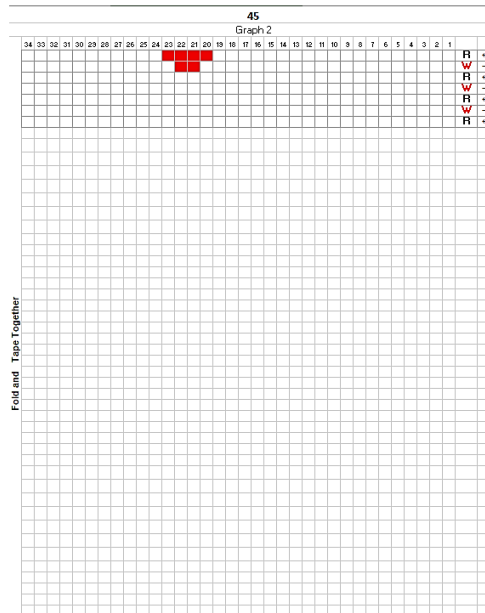
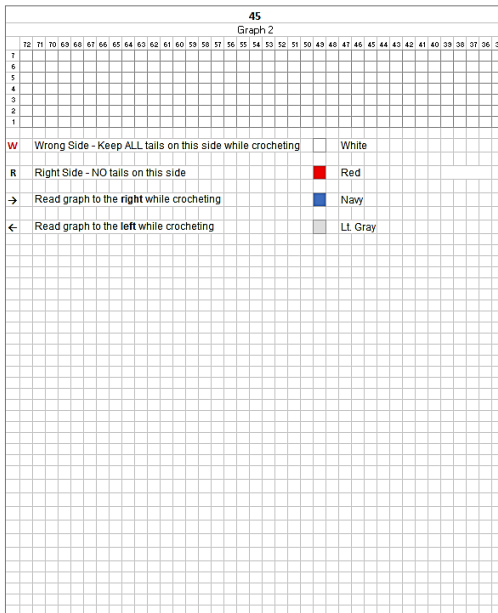
st – stitch

Print Graph. Tape graph together as shown on pages:

**Fold edge back on this page
and tape both pages together.**



**Fold edge back on this page
and tape both pages together.**



Front Panel

Using the Main color (White) yarn, ch 73 (foundation chain).

Row 1: Sc in the 2nd ch from your hook (this will be your first stitch). Follow graph for Row 1. For each row after that, begin each row with ch 1 before turning your work. Do **not** work in the ch 1, but begin in the first sc of the previous row. (72 sc)

**Note - You may want to loop a piece of odd colored yarn (or use a stitch marker) around RIGHT side of work to mark it as the right side. This may help you avoid confusion. Remove it when crocheting is completed.*

Mark Right Side to avoid confusion



Rows 2 – 54: Ch 1, turn; follow graph until panel is complete. Finish off. Weave in ends, if not woven in periodically already. (72 sc each row)

Back Panel

Using the Main color (White) yarn, ch 73 (foundation chain).

Row 1: Sc in the 2nd ch from your hook and each ch across. (72 sc)

Rows 2-54: Ch 1, turn; sc in each sc across. (72 sc each row)

Finish off. Weave in ends.

Assembly of Pillow

There are two choices in filling your pillow cover:

Using a Pillow Insert

With **right sides** of panels facing each other, slip st around two sides and top, leaving bottom open. Finish off and weave in ends.

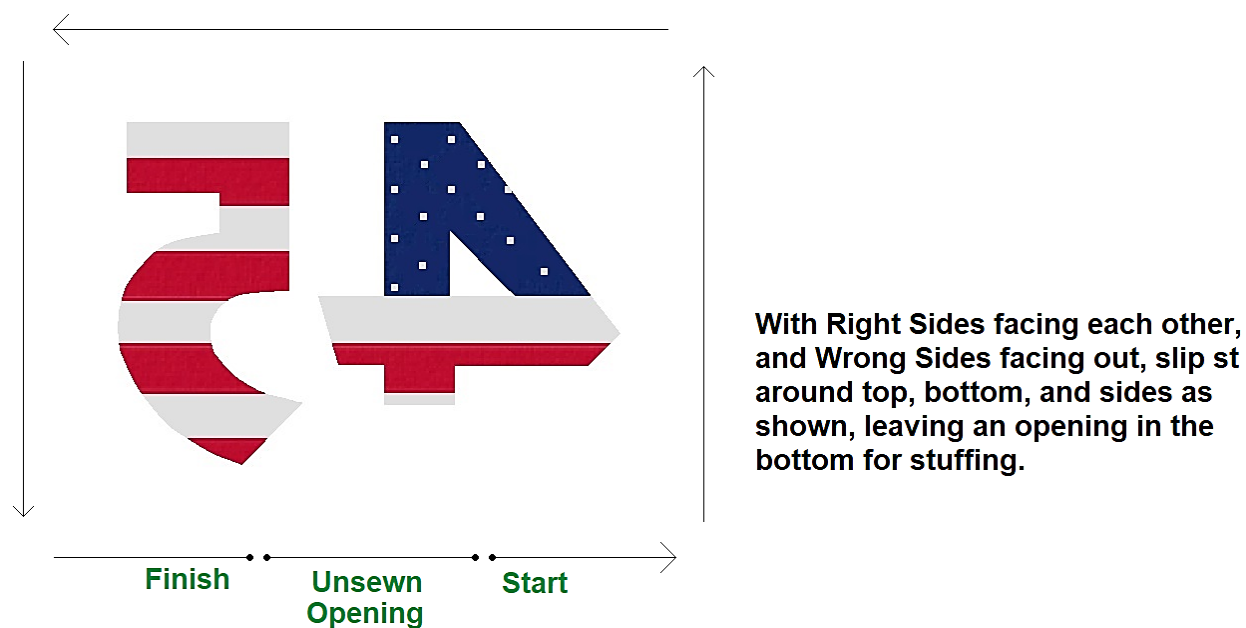
Turn pillow cover **right side out**.

Place pillow insert inside pillow cover, insuring corners are fitted properly.

With yarn needle and Main Color, whipstitch bottom of pillow closed. Weave in loose ends.

Using Polyfil Stuffing

Using Main Color and with **right sides** of panels facing each other, slip st around edges as shown in the image below:



Finish off, leaving a long tail to use for completing the seam after stuffing.

Turn pillow cover **right side out**.

Fill pillow cover with polyfil stuffing, making sure corners are filled well and stuffing is evenly distributed inside cover.

With yarn needle and Main Color tail, whipstitch opening closed. Weave in loose ends.

Great job! Now fluff your pillow and enjoy!

Designer Notes

I really hope you enjoy my patterns! It is my passion and my joy to share them with you.

For any problems or questions, please feel free to contact me via email or FB messenger.

Patterns are copyrighted so please don't copy, share or sell them. However, you are welcome to make and sell items you make using my patterns, just please mention a link to my shop in your listing www.etsy.com/shop/NeedleMeThatCrochet.

Where to Find Me

Email: needlemethat@yahoo.com

Facebook: <https://www.facebook.com/NeedleMeThat/>

Etsy: <https://www.etsy.com/shop/NeedleMeThatCrochet>